



KREMER SIGNS

Signage Guide



KREMER | BOARDS



KREMER | OFFICE



KREMER | DISPLAYS



KREMER | NEW HOMES

| | |
|--------------------------------------|---------|
| About Kremer Signs | 2 |
| KREMER BOARDS | 3 |
| Estate Agent Boards | 4 |
| Estate Agent Board Types | 5 – 7 |
| Commercial Signage | 8 |
| Design Service | 9 |
| Making The Perfect Board | 10 |
| Why Choose Kremer Signs? | 11 |
| Eco-Friendly Boards | 12 |
| KREMER OFFICE | 13 |
| Office Fascia Signs | 14 – 15 |
| Fascia Letter Styles | 16 |
| Projecting Signs | 17 |
| Pavement Signs | 17 |
| Internal Branding – Lifestyle Images | 18 |
| Internal Branding – Wall Maps | 19 |
| Internal Branding – Wall Logos | 20 |
| Window Graphics | 21 |
| Services | 22 |
| KREMER DISPLAYS | 23 |
| Window Displays | 24 |
| LED Light Pockets | 25 |
| LED Light Pockets (Multi) | 26 |
| LED Light Pockets (Coloured) | 26 |
| Freestanding Window Displays | 27 |
| Wall Mounted Window Displays | 28 |
| Bespoke Window Displays | 29 |
| Guidelines | 30 |
| KREMER NEW HOMES | 31 |
| New Homes | 32 |
| Banners & Hoardings | 33 |
| Main / Pre-Site Marketing | 34 – 35 |
| Site Signage | 36 |
| Marketing Suite Signage | 37 – 38 |
| Off Site Marketing | 39 |
| Other Signage | 40 |
| Recycling – A Greener Future | 41 |



About Kremer Signs

Kremer Signs are market leaders for signage. We supply to all sectors within the property industry including Residential, Commercial and Land & New Homes. Our philosophy is simple, high quality at competitive prices and above all a personal, friendly and professional level of customer service that truly sets us apart.

Our History & Vision

Established in 1985 in a small single unit in Berkshire, we now trade from 3 locations within the UK with a total production capacity in excess of 40,000 sq.ft, offering a personal service on a national scale, servicing an estimated 60% of UK agents.

With over 30 years of experience within the marketplace our vision still remains the same as the day the first board was printed. We aim to provide the highest quality of signage available to UK estate agents, offering a full signage solution from design to install, at a competitive price.

Historically Kremer Signs was established to supply the traditional For Sale / To Let board, but as the years have passed, the company has evolved, we now offer a one stop shop service for all signage requirements, from the office fascia sign to illuminated window displays. By utilising our four divisions (Kremer Boards, Kremer Office, Kremer Displays and Kremer New Homes) combined with our in-house design studio, we can offer total brand consistency throughout all of your signage requirements no matter what substrate. This level of integrity can be difficult to achieve when using various suppliers.

Kremer Signs has developed a loyal client base and we are passionate about keeping a focus on customer service. We proudly maintain strong lines of communication by using dedicated Sales Executives and Business Support Managers for all of our customers. Our customers expect reliability, quality and value for money from Kremer Signs, this is why we have invested heavily in state of the art printers to improve efficiency and ensure a first class service is matched with high quality signage.

KREMER | BOARDS



Estate Agent Boards

Kremer Signs are the UK's leading supplier of residential estate agents boards - such as the 'For Sale' and 'To Let' signs you see along almost any residential street. We have a reputation for supplying high quality and durable boards to a wide variety of clients throughout the property market place. We offer a full design service and production facility that can accommodate almost any request for colour and shape.





T Boards

Proving to be the UK's most popular style of residential board. The T Board is created using 2 sheets of 4mm correx heat welded on the edges to form a durable, high quality centre post board.

All boards will be pre-drilled to suit slips and posts to ensure the boards are finished to the highest possible standard.

We also use our exclusive '**grey back**' correx material that has a pure white face with a dense grey back, which totally blocks any 'show through' of the post, even in the strongest sunlight.

Flag Boards

Flag Boards are perfect to use on terrace properties or properties with no front garden, as they can be erected with the post flush to the property, so that the sign projects from the wall.

The Flag Board is created using 1 sheet of 6mm heavyweight correx, which is then printed double sided.

All boards will be pre-drilled to suit slips to ensure the boards are finished to the highest possible standard.



Hangman Boards

The Hangman Board is an American adopted style of residential board - and they are proving to be ever more popular. If you have a portfolio of high end properties, or a prestigious property division, then a Hangman Board can give your brand that 'up market' look to suit.

Hangman Boards are created using 1 sheet of 6mm heavyweight correx, which is then printed double sided. All boards will be pre-drilled to suit slips and post brackets.



Shaped Boards

The shaped style board can prove to be a key tool in helping to increase your presence on the streets - and a way of standing out from the competition.

The boards can be cut out of oversized material to maximise your advertising display area to its full potential, within half a squared metre legal limit requirement. We will also have a specific cutting tool made to suit your desired shape, which we then stock for future orders.

Mirror Vinyl Boards

Mirror boards are something which is relatively new to the market, but a great way of making boards more eye catching. It is another style to consider to help make the boards stand out and gain the edge over rival agents.

The whole board itself is flooded in the mirror vinyl prior to print, so that all of the white / un-printed areas of the board will be left with the mirrored finish. The mirror vinyl has a highly adhesive backing for permanent use and can be supplied as either silver or gold.



Reflective Boards

If you have ever wondered how you can maximise the exposure of your boards around the clock, then the answer is reflective boards. The passing car lights, street lamps etc, will make your boards unmissable at night, making this option perfect for the darker seasons.

The reflective effect on the board is created by a vinyl that is applied direct to the correx. Any white or un-printed areas of the board will be left with the reflective finish.



V Boards

The perfect style of signage to suit terrace properties. The V Board is created using 1 sheet of 6mm correx, which is printed single sided. The sheet is then scored in 3 positions to create the V shape and the tabs for erecting to a wall or window. We can fit window suckers and safety string to the boards if required. These are the types of V Boards we supply:

- Mini V Boards (with or without window suckers)
- Residential V Board
- Commercial V Board (4x3, 4x4, 5x4ft)

Event Signage (Boards and slips)

Event Signage is the perfect way for an agent to increase brand awareness and to show your local community your charitable side as well. With our digital printing capabilities, we can manufacture and deliver event signage on a fast turnaround, to achieve event deadline dates.

Event signage can be produced in two ways; as event slips, which is the simplest option, as this would fit to your board in the same way a usual 'Sold' slip would fit. Alternatively we can print a full size board, which offers a larger advertising space.



Posts & Fittings

All posts we provide will come pre-drilled or slotted to suit your residential boards, or fitted with brackets if you have ordered hangman posts. All posts come sawn to a point at the bottom for easy installation. Our posts as a standard are 8ft high, but can be shorter or longer to suit your needs. The colour of a standard post is white, but can be painted to match your branding. We also supply **metposts** and **angle irons** for use in rural locations to increase stability in areas with high winds. All of our fittings are washer faced to ensure your boards stay on the posts and that slips cannot easily become detached.

Commercial Signage

For Commercial boards, we offer three different types of material, and the style chosen is normally based on the location as to where the sign will be installed, and also the length of time the sign will be up for.

As a standard for most commercial boards, we use a 6mm heavyweight correx, as this is the most cost effective way and provides good durability. We print the board single sided and can then be erected freestanding or to a wall, which can be combined with another sheet to make up a V shape board. The size limits range from **4ft x 3ft** through to **8ft x 4ft**.

For properties which require something more heavy duty, we would offer a 10mm Foamex board, which will be produced in the same way, but this style can reach a maximum sheet size of **10ft x 5ft**. Foamex is economic, versatile and lightweight. It has a smooth satin finish and high impact resistance.

For commercial signs which will be used for permanent use, or will be up for a long time, we would recommend using a 3mm dibond sheet. Aluminium Dibond is light in weight but strong, and has an extremely flat surface, which makes it perfect for printing directly on to.



Design Service

Our Design Studio is the foundation for every successful design. The final product, whether it be a 'For Sale' board or a fascia sign depends totally on the creative skills dedicated to designing it. Our studio is staffed by a team of professional Graphic Designers with high-tech skills and years of experience in producing eye catching and contemporary designs.

We operate using both PC and Apple Mac as well as using the latest graphic design software. We are able to receive clients' images and artwork via email, USB drives and CDs. We also have access to an extensive library covering thousands of type styles (fonts) and graphic images to give all of your design requirements a distinctive look.

From one colour through to four-colour process, we can create a design that is right for you and produce the artwork that will give your branding impact as well as a high quality finish. Our computerised Pantone colour matching system enables us to match almost any colour in the Pantone range.

- For us, the most important step is quite simply to listen to you. It is only by understanding your aspirations and considering any existing styles, logos and colour schemes, that we can begin applying ideas to an otherwise blank sheet.
- The creative stage. Our designers use your brief as the basis for a brainstorming session in order to come up with a range of ideas. Visuals are then supplied to you in a PDF format.
- Decision time! You may opt for just one of our designs or you may even decide to employ a 'mix and match' of the submitted designs. Only when you are happy with your designs, do we then move forward to produce your order.



Making The Perfect Board

Board Manufacturing

With our 4 state of the art INCA Spyder and Canon Arizona printers, we can produce the highest quality estate agency boards on the market. Prior to print we prime all of our correx material to ensure a strong bond between the inks and the material. After print, we then run the boards through a UV drying process which increase the board's durability dramatically, which in turn will result in a better life expectancy of your signage.

For T Boards, we heat-weld the two sheets together to create the opening down the middle for the posts, which forms a bond between the two sheets that cannot be pulled apart, which is far more superior to double sided tapes, as these can prove to become brittle whilst exposed to colder temperatures.

For boards with a predominantly white design, we will use our exclusive 'grey back' correx sheet material that has a pure white face with a dense grey back, which when the two sheets are heat welded together, totally blocks any show through of the post erected through the middle, even in the strongest sunlight. This is a problem that many agents face that have white board designs, which can make the boards look cheap, and in some cases make the text hard to read, when a shadow is casted vertically through the board due to the stake. Another major benefit is that the new correx, the heaviest in the marketplace at 700gsm, is made from fully recycled materials making it not only the best quality agency board on the market, but also the most environmentally friendly.

- UV drying to strengthen the bond between the inks and the correx.
- Unique grey back material to eliminate post and text show through.
- High quality 8 colour process digital print.
- Pre-drilled boards to suit post and slip fittings for easy assembly.
- Custom drilled posts, painted and pointed for easy installation.



Why Choose Kremer Signs?



Kremer Signs are the UK's leading supplier to the property market, due to our commitment to producing high quality signs at competitive prices. Estate Agents across the country choose Kremer Signs as their preferred signage suppliers.

Kremer Signs have experienced success in a number of different award ceremonies, recognised within the property sector. We have been awarded gold in the category 'Supplier of the Year' at both the Negotiator and the Sunday Time Estate Agency of the Year award ceremonies. To date, we remain the only signage supplier to have achieved both awards.

Our Social Media presence in the West Berkshire Business Awards was rewarded when we won the 'Best Social Media' category award. This was a great achievement for us as we regard online marketing as a key tool in our company marketing plan.

Eco-Friendly Boards

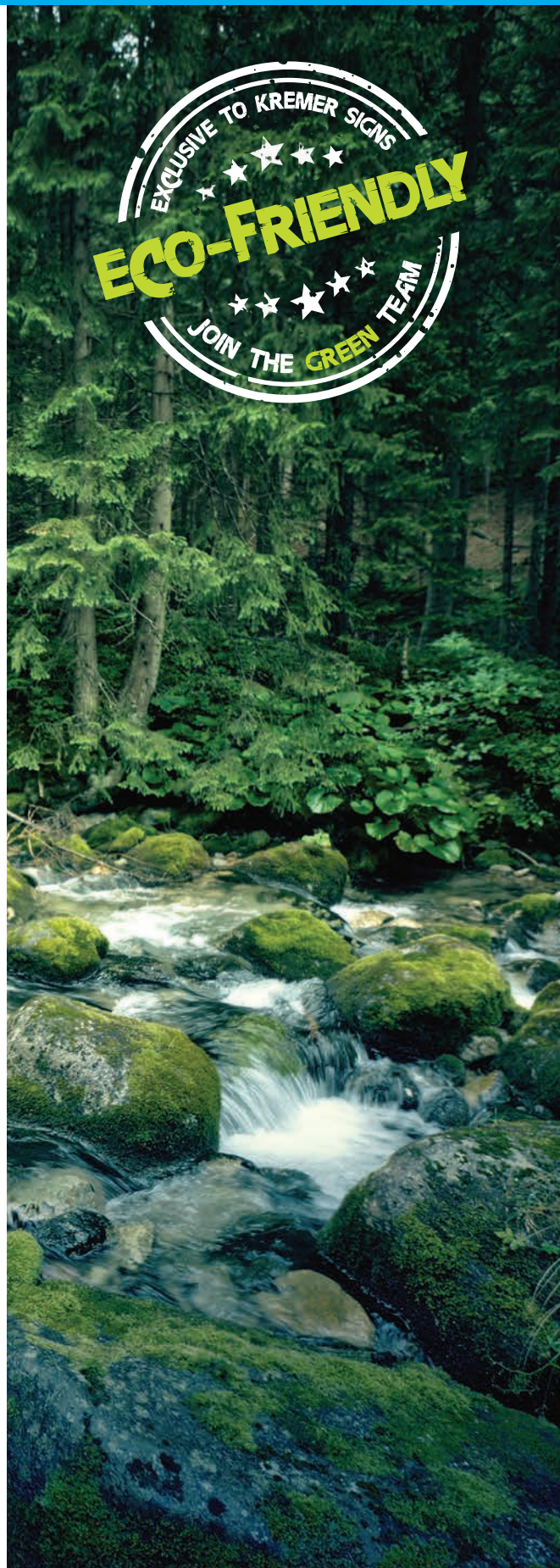
Tom Cummuskey, our sales and marketing manager, introduces our newest product made available to UK estate agents, eco-friendly boards. As part of our environmental pledge, we review annually what we can do and how our products can help to improve both ours and our customers carbon footprint. This green solution for estate agents is totally exclusive and unique to Kremer Signs and really is a game changer for the industry.

As you will all know global warming and climate change have become massive issues and are affecting the entire planet. We have decided to release a new board to the market that won't contribute to the crisis. By doing this, we hope to encourage other companies to join in our effort to fight against climate change and to promote eco-friendly practices all around the world. The more each company's carbon footprint is reduced on the planet, the better it will be toward slowing down the irreversible effects of climate change.

Our new eco-friendly boards are specifically targeted toward estate agents because of their boards use throughout the country to promote their properties. We have developed a fully recyclable correx sheet which is the material used to make the board, and is made from recycled plastics and other recyclable materials. These signs will be recycled again and again without ever going into a landfill.

We have also been running a free scrappage scheme for the last 5 years. The purpose of the scheme is to collect used 'end of life' boards off the street so that they don't end up in landfills. We have already retrieved 1.2 million signs and counting.

Join The Green Team today!



KREMER | OFFICE



Office Fascia Signs

From a simple aluminium sign tray to a fully illuminated office fascia, we can help you achieve effective presentation. Our range includes;

Dibond and aluminium fascia panels, built up stainless steel lettering, LED halo illumination, light boxes, CNC cut stand off lettering and parabeam (strip) lighting.

We have always recognised that brand consistency is crucial to our customers, and that corporate branding should remain identical throughout. Whether that is on a 'For Sale' board, pavement sign, wall graphic or a complete fascia sign, we guarantee your brand colours will remain the same.





Fascia Letter Styles

Built-Up LED Letters

For maximum possible exposure and full illumination, built-up LED letters are perfect. The built-up letters are fitted with LED's inside, pointing backwards towards the wall/tray which gives an even glow around the letters/logos. The glow can be supplied in almost any colour, which is perfect for brand consistency.



Fret Cut LED Letters

The lettering or the logo is fret cut from the dibond tray, and is then powder coated to match any RAL colour reference to match your branding. It is then backed up in acrylic which can be supplied clear or opal if you wish for the illumination coming through to be of a different colour than the standard LED white.



Fret Cut LED Push Through Letters

Similar to the standard Fret Cut LED Letters, this can also be supplied as a push through letter which is where the acrylic is pushed through 10mm from the sign tray, through the fret cut areas to give a slightly 3D effect, as well as a great LED illumination. This can also be supplied clear or opal for a different colour.



Stand-Off Letters

Stand-off letters are perfect to add depth to your fascia, by allowing the letters to stand proud 50mm from the tray via studs and cups, which, when paired up with an LED Parabeam, can look very impressive. Also, perfect for non-illuminated fascias, to help your sign to still stand out from the crowd.



Vinyl Letters

Normally used on non-illuminated fascia options where there could be restrictions due to budget, council or having a listed building. Vinyl text can be applied direct to the fascia which is perfect for very intricate logos. It is also useful to illuminate the sign as well with a parabeam.



Projecting Signs

We offer both illuminated and non-illuminated options, which is normally dependent on the style of fascia you have. For non-illuminated Projectors they will be supplied as a single aluminium sheet printed double sided and erected via a wrought iron bracket.

We can illuminate the Projecting Sign by fret cut lettering or flex face illumination or even supply mini LED Parabeams to run along the top for a classy downwards spot light. We can achieve a shaped effect to your Projecting Sign to help yours stand out when walking up the high street and to remain in keep with your branding.



Pavement Signs

Pavement Signs can either be produced with a simple message such as 'Open' or can be personalised with full colour logos and messages. Pavement signs are a great way to help capture the attention of passing traffic on busy High Streets. Our range includes fixed or swing, 'A' frame or base mounted.

Swing Sign



'A' Board



Standard Performa



Internal Branding

Lifestyle Images

Life style images are extremely effective in adding character to your office. Displaying well known images taken from your local area can offer an inviting and familiar environment.

The life style images are normally supplied as a 3mm dibond sheet which is then erected to the wall, such signage can be illuminated via spot lights, but if you want to bring the image to life, then a flex face may be an option to consider. The image will be produced onto a tensioned banner on an aluminium frame which is 100mm in depth from the wall. Behind the tensioned banner will be an LED light sheet, which will illuminate the whole image, giving off a very impressive visual effect.



Internal Wall Maps

We can also supply a variety of wall maps covering your local area. These large format maps can be cut to size to suit your office wall. Illumination can be applied if required.

Dibond Maps can be digitally printed directly onto individual sheets. Any overall size can be achieved using more than one sheet for the desired area of wall coverage. The map will usually be mounted slightly away from the wall using steel spacers. We can also produce **Acrylic Maps**, which offer improved protection from general wear and tear. Finally we can offer a **Flex Face Wall Map**, which is similar to a flex face fascia but on a smaller scale. The map will be produced onto a tensioned banner on an aluminium frame which is 100mm in depth from the wall. Behind the tensioned banner will be an LED light sheet, which will illuminate the whole map, projecting a very impressive visual effect.



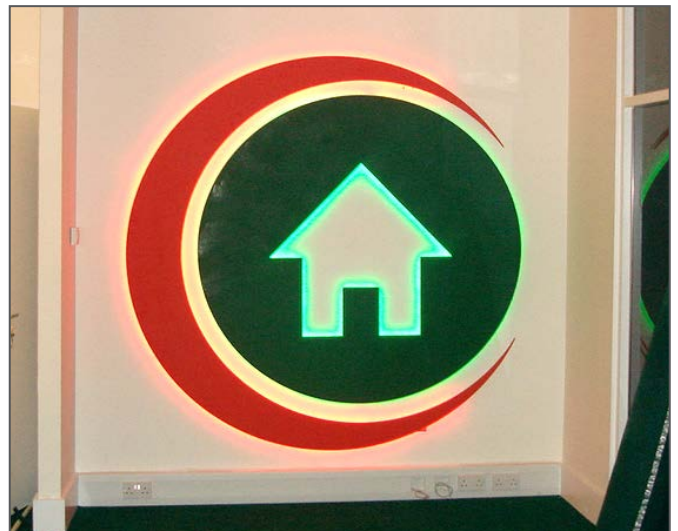
Internal Branding

Internal Wall Logos

Internal wall logos are becoming ever more popular, proving to be a great way of strengthening your branding, as well as increasing your office presence on the high street.

We can create your company logo or any text required out of acrylic, which can be applied either direct to the wall, or via studs and cups, which allow the logo/lettering to stand proud from the wall.

We also offer illuminated options, by creating a built up logo or text in stainless steel which can be capped in any RAL colour, which produces a LED halo illumination which will reflect back onto the wall.



Window Graphics

Window Graphics can be supplied in many styles and forms, depending on the application. We offer **Frosted Vinyl** graphics, which are made from premium grade frosted vinyl and can be applied to either the inside or outside of windows. The frosting appearance is enhanced when exposed to natural light giving a sleek and professional look.

A **Full Window Wrap** can provide the perfect advertising solution for a new build office or a project undergoing renovation, where privacy is paramount. Window graphics are also great ways to provide extra advertising space to promote various offers or information.



Services

Manufacture

Kremer Signs have over 40,000 sq.ft of manufacturing capacity, situated across the UK in Newbury, Bristol, Birmingham and Lincoln.

Our strategic locations are all equipped with state of the art manufacturing equipment and operate 24 hours a day, servicing all our clients needs.

Keeping up-to-date with the latest materials, manufacturing processes and technologies has cemented our position as one of the leading sign companies in the UK. We employ our own specialist fitters and our policy is to maintain full in-house control over all site work. Our fleet of delivery vehicles operate nationally with fitting crews based at strategic locations throughout the UK. Our project management teams provide hands-on management at all times while keeping close control of all on-site works.

Installation

Our dedicated team of installers are fully qualified and happy to work around the clock to install your new signage at your premises and will liaise with your arranged contact to discuss any access requirements to ensure installations are carried out safely, at your convenience. From our initial survey, we will identify any restrictions or obstacles to ensure the installation teams are fully kitted with the right access equipment, this includes working at heights with the correct ladders, scaffold towers, abseil teams, boom lifts or a simple set of ladders.

We will remove any old signage, dispose as required at no extra cost and ensure that the installation teams clean down the signage and simply clear the surrounding area before departure. All the electrical elements are tested before leaving the factory, then re-tested on installation. Photographs are taken at every stage to show the before and after images.



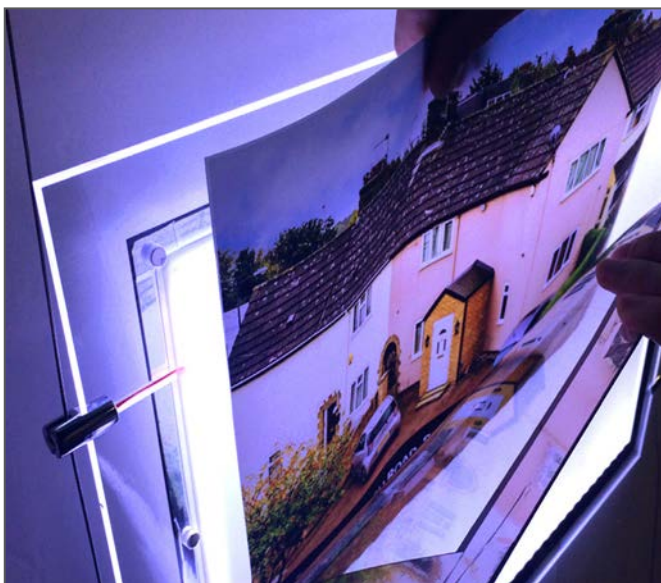
KREMER | DISPLAYS



Window Displays

We offer a wide range of window displays, ranging from free standing, through to cable display systems, all of which can be supplied with or without LED illumination.

A great benefit of LED illumination is to increase the exposure of your property portfolio around the clock, and can also bring your office to life during the darker seasons. LED illuminated window displays paired up with an LED illuminated fascia can make all the difference in increasing brand awareness over your competition. Don't let business walk past your door.



LED Light Pockets

Compact design and excellent value, our LED Light Pockets have a narrow border, which is ideal for use when space is tight. These are available in single and multi-width options.

- Silver 12mm screen printed borders and clear acrylic borders
- 'U' shaped pockets with magnets to ensure poster held firmly in place



A4 Portrait

To fit cable centres 470mm



A4 Landscape

To fit cable centres 346mm



A3 Landscape

To fit cable centres 470mm



A2 Portrait

To fit cable centres 470mm



A2 Landscape

To fit cable centres 643mm



A1 Portrait

To fit cable centres 643mm

LED Light Pockets (Multi)



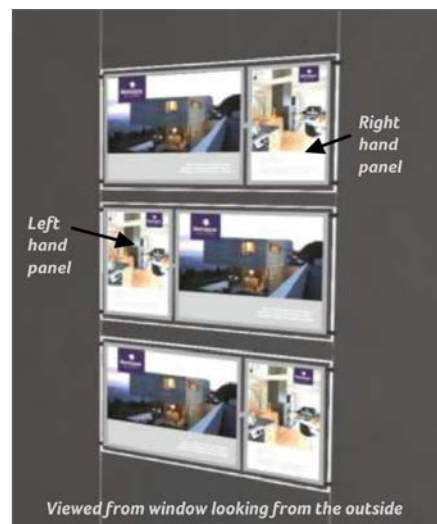
A4 Portrait - 2 wide

Overall Acrylic size:
484 w x 329 h mm



A3 Landscape - 2 wide

Overall Acrylic size:
920 w x 329 h mm



A3 & A4 Pockets

Overall Acrylic size:
717 w x 329 h mm

LED Light Pockets (Coloured)

Coloured glow edge panels come with a black surround. The border can be replaced by a custom colour or decorative frame, which simply hook onto the deluxe light pockets.



A4 Portrait

To fit cable centres 506mm
To fit rod centres 510mm



A3 Landscape

To fit cable centres 506mm
To fit rod centres 510mm



Additional Pockets

with clamps for rods.
To fit rod centres 510mm

Freestanding Window Displays

Supplied in black, with a 10mm clear glow edge. Special colours on request.



A3 Landscape

Overall size:

515 x 1114mm

Floor to bottom of panel:

470mm



A3 Landscape - 2h x 1w

Overall size:

515 x 1114mm

Floor to bottom of panel:

470mm



A4 Portrait - 2h x 2w

Overall size:

590 w x 1114 h mm

Floor to bottom of panel:

470mm



A4 Portrait

Overall height: 1114mm

Overall depth: 390mm

Supplied with two supporting stands



A3 Landscape - 2h x 2w

Overall height: 1114mm

Overall depth: 390mm

Supplied with two supporting stands



A4 Portrait & A3 Landscape

Overall height: 1114mm

Overall width: 1065mm

Supplied with 2 support stands

Wall Mounted Window Displays

Wall mounted units are supplied with black supports (WM16), which brings the panel away from the wall by 50mm. All units are supplied with an acrylic holder which can be mounted behind the panel or remotely. For a tidy installation, position a standard electrical socket just behind the panel.



Single Pocket



A4 Pocket - 2h x 2w

Panel size:
590w x 734h mm



**A4 Portrait
& A3 Landscape**

Panel size: 1120w x 734h mm



A3 Landscape - 2h x 1w

Panel size:
515w x 734h mm



A3 Landscape - 2h x 2w

Panel size:
1010w x 734h mm

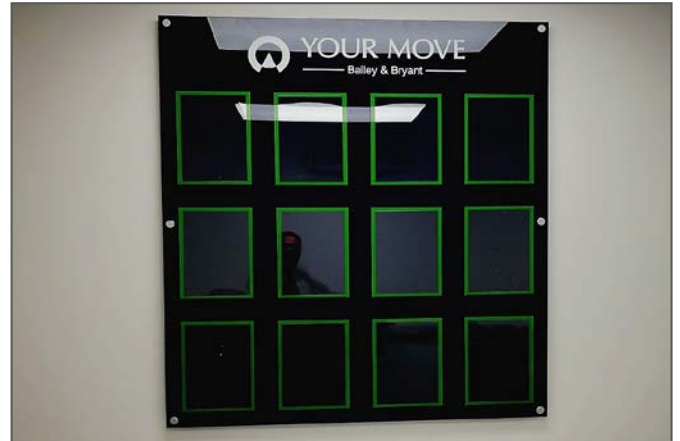


**Clear 8mm panel
plus glow edges**

A1, A2, A3 & A4 Sizes

Bespoke Window Displays

Quite literally, the possibilities are endless! Having already seen our standard ranges, please let our bespoke gallery inspire you for display ideas which are outside the box and can furthermore help to enhance your brand identity through a custom cable, freestanding or wall mounted display.



Useful information for Electricians

LED Light Pockets can be connected to 13 amp sockets or to an electrical spur. Before installation, always check the total amps required. Eg. A display consisting of 3x A4 Pockets will be supplied with a power pack with a 2 amp loading allowance. In a single window you may have 4 of these units which mean you would need to allow for 4 power packs each with a 3 pin plug.

Electrical Supply Required

Please note that when multiple displays are installed, you will need to allow for up to 80 - 100 amp in-rush current for up to 100 amps. We therefore recommend that a C or D type anti-surge breaker is used in the fuse board when groups of supplies are switched on manually or automatically by a time clock. Order custom made power supply holders designed to hold two power supplies with integrated sockets.

It is the electrician's responsibility to ensure that suitable provision is provided when units are switched on that everything works perfectly.

To clean the pockets, do not use any solvents as this will damage the pockets. Just use a damp cloth to clean off dust or a professional acrylic cleaner.

Guidelines for what paper to use

You have a choice of material which you can use in your LED Light Pockets. Select from professional prints or create your own in-house. Before purchasing any paper for your printer, double check if you have a laser or ink-jet printer.

Laser Printer

This is the most popular form of printing. This is a truly economical solution to achieve good results without going to the cost of having a duratran. 120 gsm Colotech Gloss coated is a double sided paper with an ultra smooth surface, giving guaranteed performance on digital laser colour copies. The high gloss finish and bright white shade gives enhanced image and sharpness.

Ink-Jet Printer

This is a plastic type material that have been sourced especially for the Light Pockets. We recommend that you order a few sample sheets to check which paper works best with your printer.

Professional **duratrans** will always give the best results and are used when a truly professional result is required.

KREMER | NEW HOMES



New Homes

For 30 years Kremer Signs have supplied the house building and commercial development industry with every type of site signage and branding they could need for a new homes development. Partner with us to execute your business communications on your terms. In recent years new home developments have seen a massive surge, with new home builds going up across the country, we understand that marketing them is an integral part of building them. From banners and building wraps to totem signs, plot boards and main signs, we provide the complete print and production service.

We as a signage design company ensure that you receive only the best in signage design and installation services.



Hoardings



Banners



Main / Pre-Site Marketing



Site Signage



Marketing Suite Signage



Off Site Marketing

Hoardings & Banners

Site Hoardings

Most construction and new development sites may require additional signage, where a standard commercial board isn't enough. We can design, print and supply a variety of hoarding signs.

Site hoarding is a vital part of any new construction project, providing both advertising and security. We can produce stylish hoarding signs to catch the eye of all passing trade to the site.

PVC Banners

PVC Banners are ideal for a wide range of marketing activities, as they are a powerful yet economical way to bring attention to your business. They can be hung almost anywhere, from buildings and ceilings, to fences and poles. All banners can be produced to suit your exact requirements and can also be hemmed, sealed and completed with eyelets to make fixing them much easier!



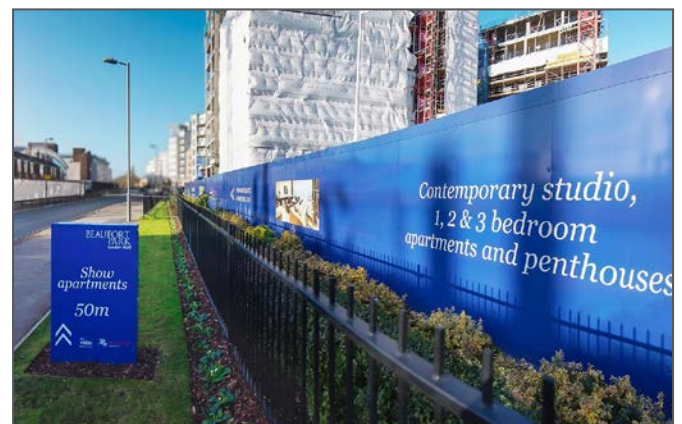
Main / Pre-Site Marketing

We offer a range of Stack / Entrance, Flags and Totem Signs as part of our Main / Pre-Site Marketing range. Stack and Entrance signs can be supplied with matching Flags and Hoardings, to raise brand awareness around the site. Totem signs are also the perfect solution to help with customer flow and way finding.



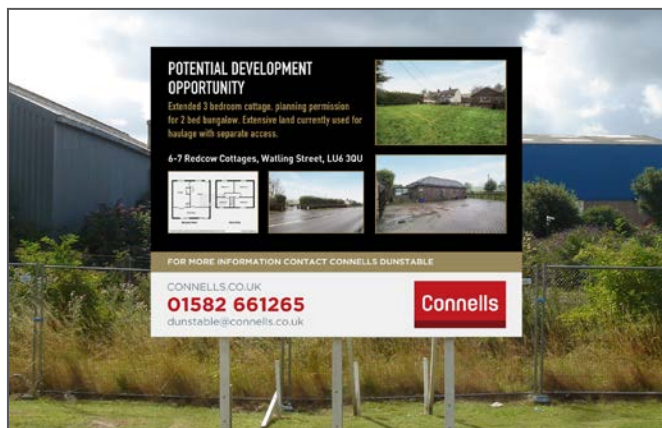
Main / Pre-Site Marketing

As part of our Pre-Site Marketing range, we also offer Development boards, Scaffolding and Building wraps. These are great ways to advertise and inform the public about your development and increases your brands presence throughout the site.



Site Signage

Site and Plot Signage is vital for any New Homes site. This helps to advertise the properties in question, showcase contact details or display floor plans. Health & Safety signs are also an important part of any construction site. Window Graphics and Pavement Signs are also great ways to utilise space and enhances awareness.



Marketing Suite Signage

As well as external Site Signage, we also offer an extensive range of interior signs for your Marketing suite. This can range from internal Wall Logos (with/without illumination) to external fascia signs. All of which will help bring your office to life. We can offer LED Illuminated Displays; Window, Freestanding or Wall Mounted options are available to help showcase the properties you are advertising on the site.



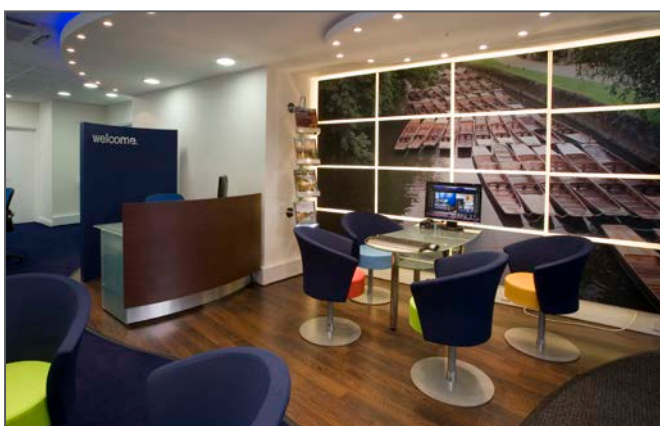
Marketing Suite Signage

As well as window graphics and external signs, we offer a wide range of internal signage options to create an inviting and fully branded Marketing Suite. Ranging from internal wall logos, wall maps to branded brochure dispensers. Lifestyle graphics are also a great way of utilising wall space to advertise your new homes. The graphics can be applied as a wallpaper or as a Dibond sign fixed direct to the wall.



Off Site Marketing

When located at appropriate points within a town or village, directional signs are important for wayfinding and have flexible applications. We supply a range of simple pointer signs which can be fixed to lamp posts using cable ties. Alternatively, large solutions can be free standing or attached to fences. Our LED light box option can be an eye catching method of advertising any new homes site.



Other Signage

As well as being the UK's leading signage supplier to the property market, we have had many clients and signage requests that are not from estate agents. We design and manufacture for garden centres nationwide, supplying both internal and external signs. Our portfolio includes forecourt, warehouse and election campaign signage.



Working towards a Greener Future!

As a company we know we have a responsibility to the environment and we are continually working to reduce our impact. We believe in a greener future!

Kremer Signs are the only national board making company, printing on recycled material with its unique grey back and are the only company that offer a national recycling service **free of charge** (T&C's apply). This is a service that we offer to all of our clients; if we are delivering boards on our own transport, we will collect any waste boards from your board erector during the delivery.

Our pledge to the environment goes back a long way. We will encourage contractors, suppliers and others to minimise their negative impact on the environment. The policy is reviewed on an annual basis to assess its effectiveness.



In the last 5 years, Kremer Signs have produced

2,500,000

signs using **fully recycled** materials.



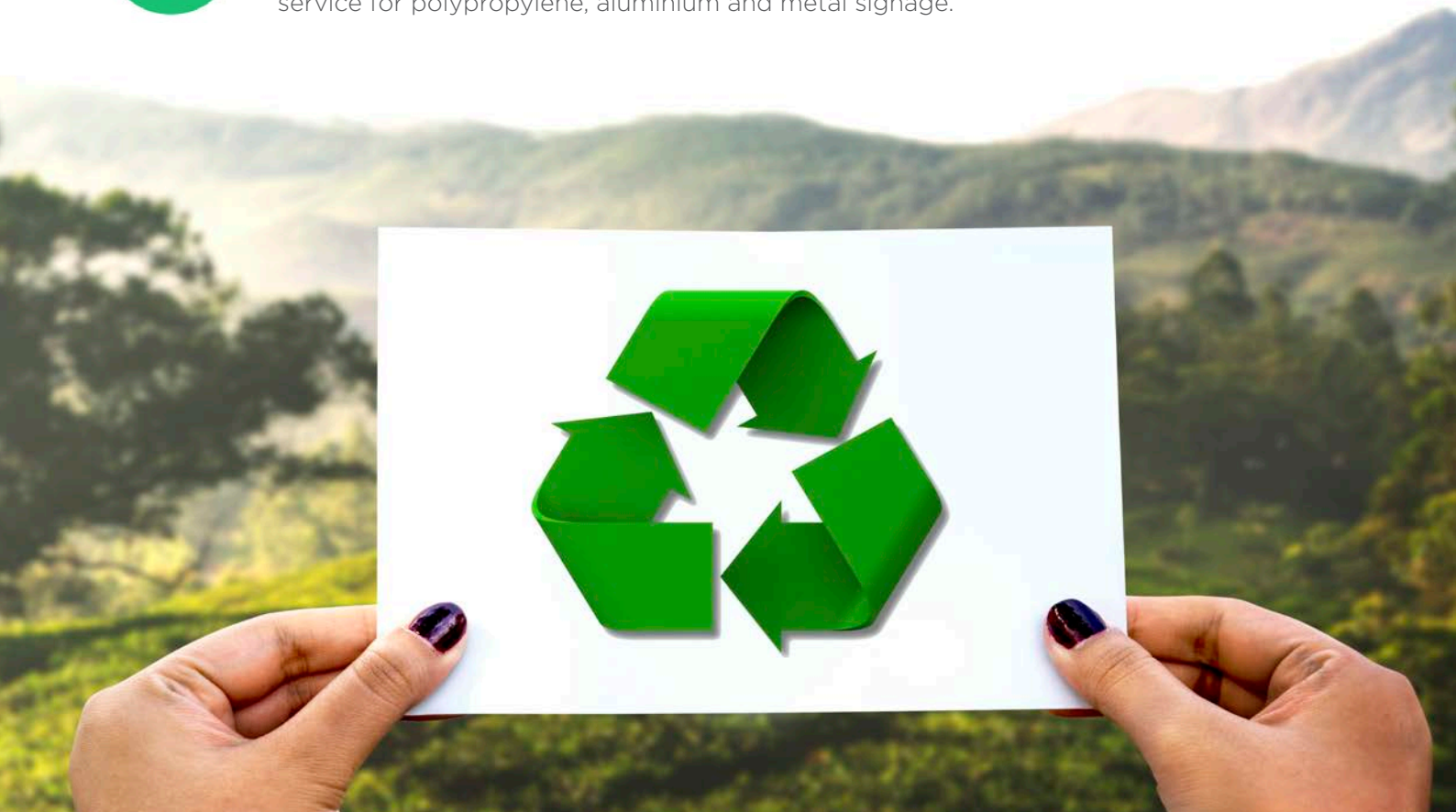
In the same period, Kremer Signs have collected

1,200,000

'End of life' signs from estate agents and sign erectors for recycling.



We have pioneered the use of energy efficient LED illumination in our signs and have implemented a wide range of technologies at our head office and workshops as part of an ongoing programme to increase sustainability and also operate a unique national recycling service for polypropylene, aluminium and metal signage.





KREMER SIGNS

T: 01635 550022 E: sales@kremersigns.co.uk

B1 - B3 Argents Mere, Cyril Vokins Road, Hambridge Lane, Newbury RG14 5XB

www.kremersigns.co.uk